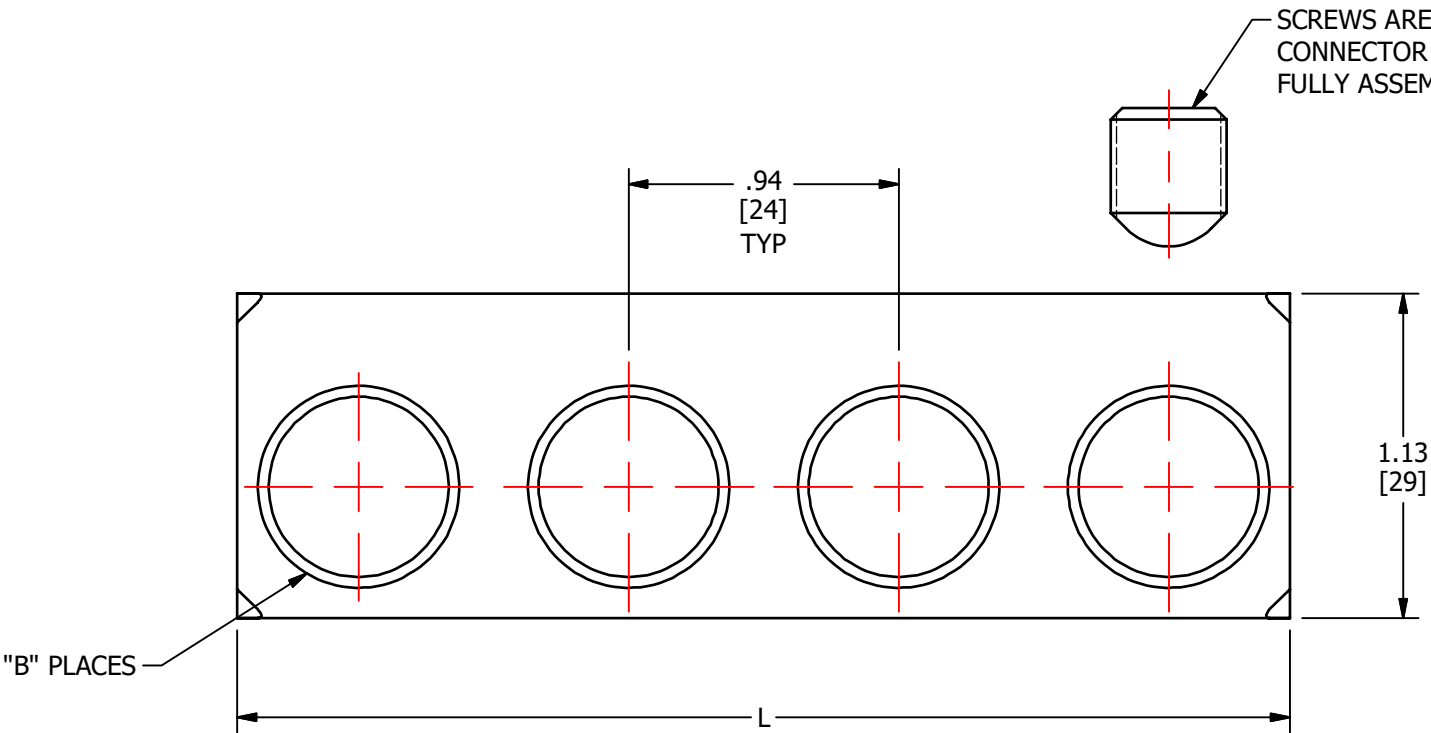
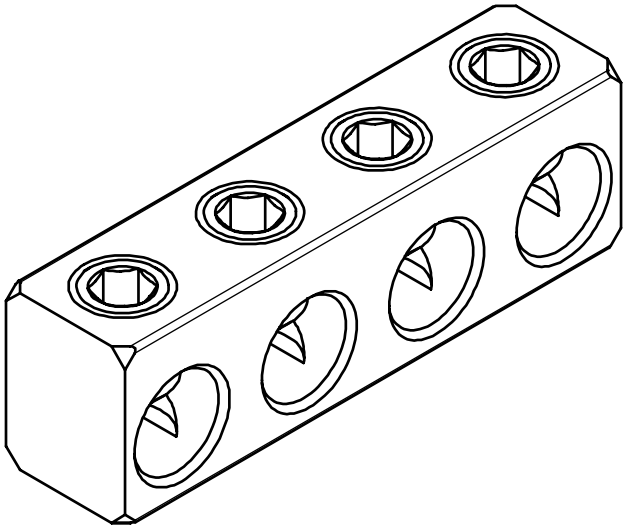
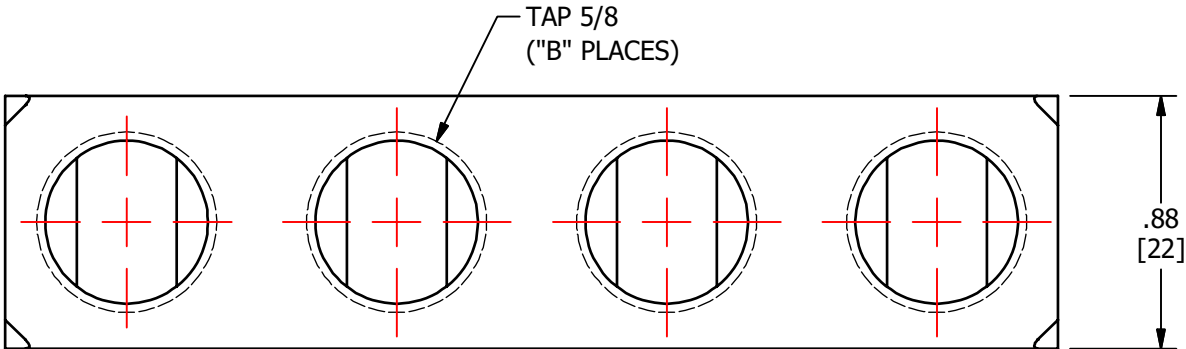
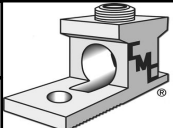


S.NO	CATALOG NUMBER	L	B
1	NA250-3I	2.72 [69]	3
2	NA250-3	2.72 [69]	3
3	NA250-4I	3.66 [93]	4
4	NA250-4	3.66 [93]	4
5	NA250-5I	4.59 [117]	5
6	NA250-5	4.59 [117]	5
7	NA250-6I	5.53 [141]	6
8	NA250-6	5.53 [141]	6
9	NA250-8I	7.41 [188]	8
10	NA250-8	7.41 [188]	8



FINISH: CLEAR PLATE  
MATERIAL: ALUMINUM  
CONDUCTOR RANGE: 250 KCMIL - #12 AWG  
DUAL-RATED CONDUCTORS  
(ALUMINUM OR COPPER)

					TO ORDER CMC PRODUCTS CALL 1-513-860-4455	DRAWN BY: TS 12/17/18	NAME OF PART: PEDESTAL CONNECTOR	CAT. NO.: SEE TABLE
					FOR PRODUCT INFO: <a href="http://www.cmclugs.com">http://www.cmclugs.com</a>	CHECKED BY:	DWG NO: C58700001-0-S (CHARTED)	B
A	NEW DRAWING CREATED		12/17/18	TS		DRAWING NOT TO SCALE	SHEET NO: 1 OF 1	
REV.	DESCRIPTION	ECN	DATE	INIT.				

THIS INFORMATION IS PROPRIETARY TO CONNECTOR MFG. CO. AND IS NOT TO BE DISCLOSED OUTSIDE OF CONNECTOR MFG. CO. WITHOUT A CONFIDENTIALITY AGREEMENT



CONNECTOR MANUFACTURING CO.

HAMILTON, OHIO